



# Wildlife Tree Creation: Incorporating attributes for bats

**Informational field tour to Duncan/Lardeau and  
Colman Ranch Conservation properties, Oct 23-24, 2018**

Prepared by Darcie Quamme (IER), with Todd Manning and crew (SRS Avimetrics), Irene Manley (FLNRORD), Amy Waterhouse (FLNRORD), Thomas Hill (FLNRORD), Eric Gross (Env. Can.) and Ryan Murphy (SRS Avimetrics).

# Wildlife Tree Creation: Attributes for bats

Todd Manning provided education on his methods:

- Fungal inoculation & mechanical stem manipulations



Oct 23, 2018, Duncan/Lardeau TNT Conservation lands

Manning, E.T. and I.A. Manley. 2014. Results of fungal inoculation treatments as a habitat enhancement tool in the East Kootenay region of British Columbia: 2007–2013. Prov. B.C., Victoria, B.C. Exten. Note 112. <http://www.for.gov.bc.ca/hfd/pubs/Docs/En/En112.htm>



Girdling and inoculation in large cottonwood, 3 years post-treatment

- Todd Manning showed us examples of: (1) girdling to create dead tops, (2) scuffing to attract wildlife, (3) partial girdling to create crevices and decay columns.
- Todd encouraged us to talk to his crew about the feasibility of operations and creating bat habitat the following day at Colman Ranch. So we did!



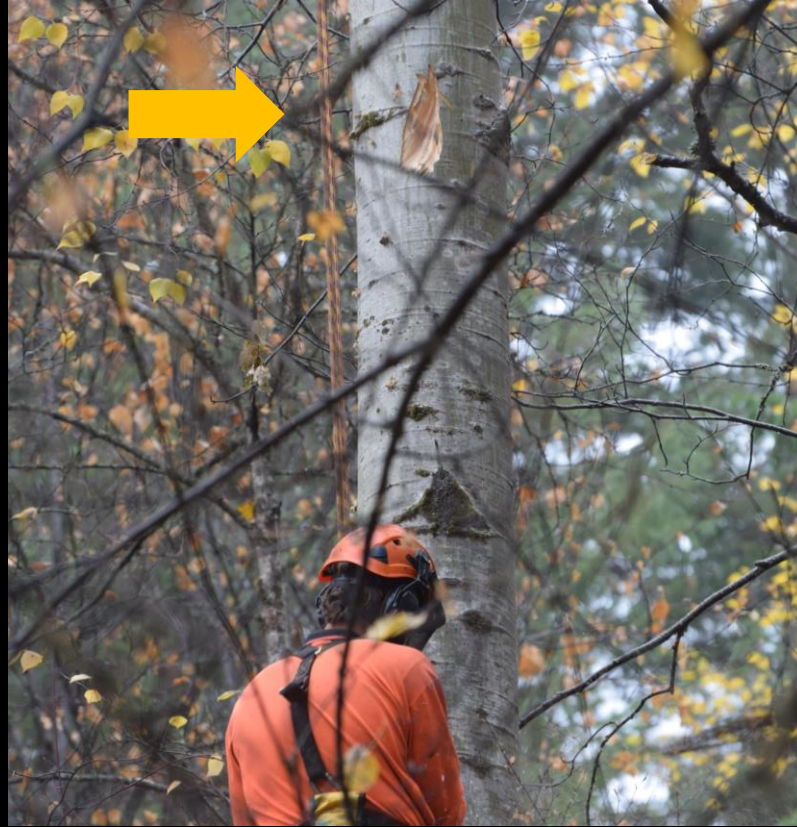
- **The SRS Avimetrics crew were kind enough to consider trials of some bat slits and undercuts on 2 trees.**
- **Photos: Topping a dominant aspen on a south-facing edge of forest opening.**

Coleman Ranch, Oct 24, 2018

A dominant aspen  
(40 cm dbh) on a south-  
facing edge of a forest  
opening was selected for  
habitat for commuting  
and foraging bats,

Coleman Ranch, Oct 24,  
2018





# Bat slits with fungal inoculation to create a decay column plus girdling

South facing cuts, Coleman Ranch, Oct 24, 2018



Douglas Fir selected on south-facing edge habitat  
>40cm dbh

Coleman Ranch, Oct 24, 2018



Douglas Fir, on south-facing edge, Coleman Ranch, Oct 24, 18

Creating undercuts for bats with topping, scuffing, girdling and inoculation

A special thank you to  
Irene Manley for  
facilitating  
and to Todd Manning,  
Ryan Murphy and crew,  
Amy Waterhouse,  
Thomas Hill, Kat  
McGlynn and Eric Gross  
for all the great  
information and further  
ideas.



